

INDIAN RIVER COUNTY ARTIFICIAL REEF SITES

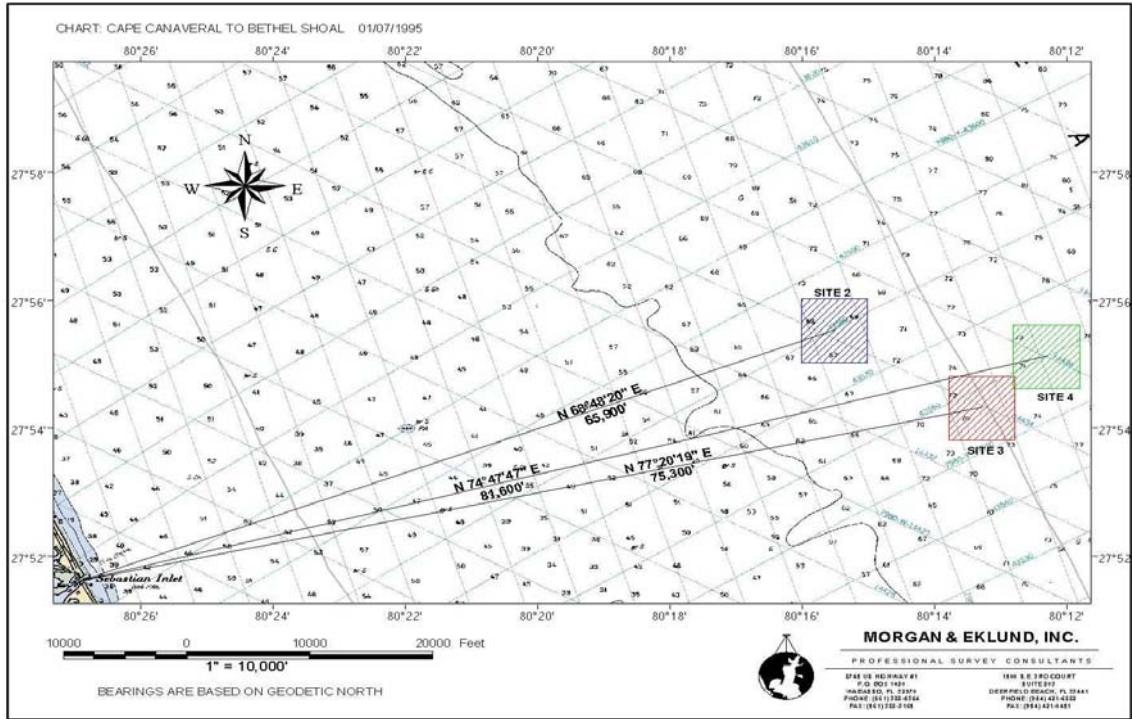
Indian River County has eight offshore artificial reefs, all located 11-12 miles east-northeast of Sebastian Inlet in 65-70 feet of water, including a **BRAND NEW** reef constructed in June 2007. These reefs provide productive fishing spots, interesting dive sites, and a good place to stop and catch live bait for offshore fishing trips. The County's reef program is supported by grants from the Florida Fish and Wildlife Conservation Commission, and is a partnership effort with the Sebastian Inlet Sportfishing Association. For more information on the program, contact Jonathan Gorham, Coastal Resource Manager at (772) 226-3482.

NEW REEF LOCATION

REEF NAME	DEPLOYMENT DATE	MATERIALS (Concrete Railroad ties)	DEPTH	COORDINATES (DD MM.MM)
3SW	June 24, 2007	1004 tons	68 Feet	27 53.920' N 80 13.675' W

OTHER COUNTY ARTIFICIAL REEF SITES

REEF NAME	DEPLOYMENT DATE	MATERIALS (Concrete Railroad ties)	DEPTH	COORDINATES (DD MM.MM)
2C	June 4 1999	553 tons	66 feet	27 55.520' N 80 15.506' W
2NW	June 29 2000	571 tons	64 feet	27 55.938' N 80 15.938' W
3C	May 28 1999	474 tons	71 feet	27 54.286' N 80 13.292' W
3NW	June 18 2000	571 tons	70 feet	27 54.710' N 80 13.713' W
4C	May 20 1999	408 tons	73 feet	27 55.085' N 80 12.302' W
4NW	June 14 2000	571 tons	72 feet	27 55.545' N 80 12.740' W
4SE	June 26 2000	571 tons	69 feet	27 54.660' N 80 11.868' W



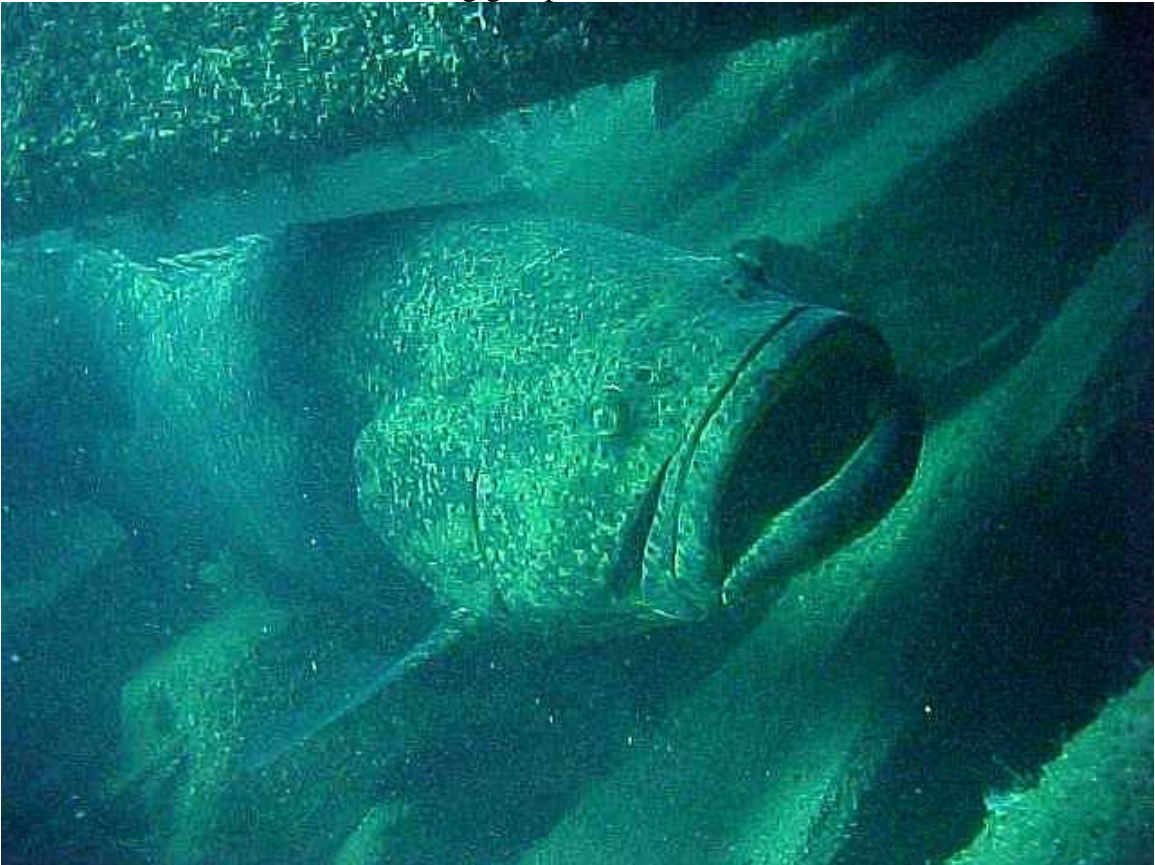
Artificial Reef Locations



Baitfish on the reef



Gag grouper on the reef



300 lb. goliath grouper on reef