

\* CROSS SLOPE VARIES (SEE PLATEAU INTERSECTION SHEET)  
 REFER TO SHEET 27 FOR PLATEAU GRADING WITHIN THE INTERSECTION OF SR 60 & 43RD AVENUE  
 \*\* STANDARD CLEARING & GRUBBING  
 \*\*\* CROSS SLOPE VARIES FROM 3% TO 4% STA. 2647+29 TO 2649+23 RIGHT

**STA. 2643+71.60 TO STA. 2649+23.00**  
**TYPICAL SECTION**  
**SR 60**

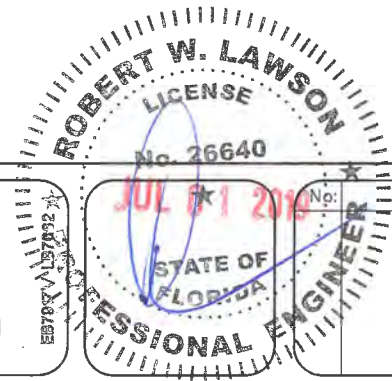
**POSTED SPEED 45 MPH**  
**DESIGN SPEED 45 MPH**

**TYPICAL SECTION NOTES:**

1. ALL PAVED AREAS WITHIN THE PROJECT LIMITS WHICH ARE NOT SPECIFICALLY COVERED BY A "TYPICAL SECTION" SHALL BE CONSTRUCTED IN ACCORDANCE WITH THE PAVEMENT SPECIFICATIONS INDICATED HEREON, UNLESS OTHERWISE NOTED.
2. WHEN LOCATED ON THE HIGH SIDE OF THE ROADWAY, CURB & GUTTER TYPE "F" SHALL BE MODIFIED IN ACCORDANCE WITH FDOT STANDARD INDEX NO. 300
3. CURB PADS SHALL BE CONSTRUCTED OF 6" BASEROCK OR 3" OF B-12.5 AND SHALL EXTEND A MINIMUM OF 6" BEYOND THE BACK OF CURB. COST OF CURB PAD SHALL BE INCLUDED IN THE PRICE FOR CURB & GUTTER
4. RESURFACE CONSISTING OF 1" AVERAGE DEPTH FC-9.5 OVER TYPE SP IS REQUIRED ON SR 60 THRU THE INTERSECTION AS INDICATED ON THE PLANS

WIDENING	
SURFACE:	1" TYPE FC-9.5 ASPHALTIC CONCRETE SURFACE COURSE (TRAFFIC C) (PG 76-22) W/ POLYMER OVER 1-1/2" TYPE SP-12.5 (TRAFFIC C) ASPHALTIC CONCRETE STRUCTURAL COURSE
BASE:	9" CEMENTED COQUINA SHELL (DOUBLE COURSE) WITH RC-70 PRIME COAT (LBR 100)
SUBGRADE:	12" STABILIZED SUBGRADE TYPE "B" (LBR-40)

MILLING & RESURFACING	
MILLING:	MILL EXISTING PAVEMENT (2.5" AVERAGE DEPTH) (LOCATIONS ARE SHOWN ON THE PLANS)
OVERBUILD:	TYPE SP OVERBUILD (TRAFFIC C) THICKNESS VARIES (0" TO 2")
RESURFACING:	TYPE SP STRUCTURAL COURSE (TRAFFIC C) 1.5" AND FRICTION COURSE FC-9.5 (1") (TRAFFIC C) (PG 76-22) WITH POLYMER.



**ARCADIS**  
 ARCADIS U.S., INC.  
 1500 Gateway Blvd. Suite 200  
 Boynton Beach, Florida 33426  
 Tel: (561) 697-7000 Fax: (561) 369-4731  
 www.arcadis-us.com

INDIAN RIVER COUNTY  
 Department of Public Works  
 Engineering Division

Scale: NTS  
 Approved: HWD  
 Drawn: FM  
 Checked: HWD  
 Date: 6/2017  
 Field Book No:

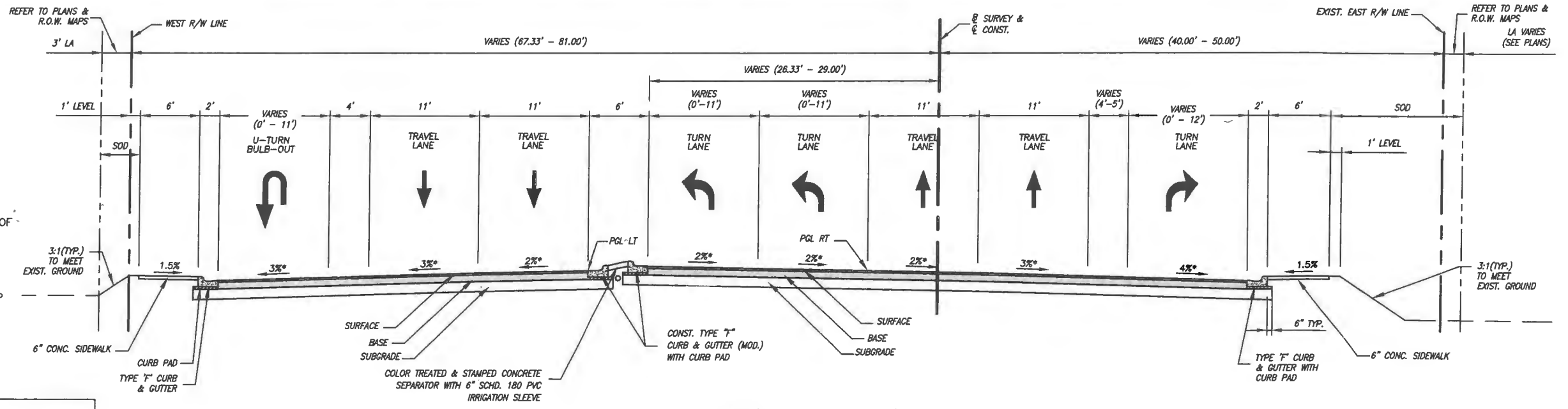
Project:  
 TYPICAL SECTIONS  
 FOR  
 SR 60 & 43RD AVENUE

Sheet: 11  
 Of: 99  
 Project No.  
 LNW# WP1027

Revision:	By:	Date:

**TYPICAL SECTION NOTES:**

1. ALL PAVED AREAS WITHIN THE PROJECT LIMITS WHICH ARE NOT SPECIFICALLY COVERED BY A "TYPICAL SECTION" SHALL BE CONSTRUCTED IN ACCORDANCE WITH THE PAVEMENT SPECIFICATIONS INDICATED HEREON, UNLESS OTHERWISE NOTED.
2. WHEN LOCATED ON THE HIGH SIDE OF THE ROADWAY, CURB & GUTTER TYPE "F" SHALL BE MODIFIED IN ACCORDANCE WITH FDOT STANDARD INDEX NO. 300
3. CURB PADS SHALL BE CONSTRUCTED OF 6" BASEROCK OR 3" OF B-12.5 AND SHALL EXTEND A MINIMUM OF 6" BEYOND THE BACK OF CURB. COST OF CURB PAD SHALL BE INCLUDED IN THE PRICE FOR CURB & GUTTER
4. OVERBUILD CONSISTING OF 1" TYPE FC-9.5 OVER OVERBUILD SP IS REQUIRED ON SR 60 AND THRU THE INTERSECTION AS INDICATED ON THE PLANS.

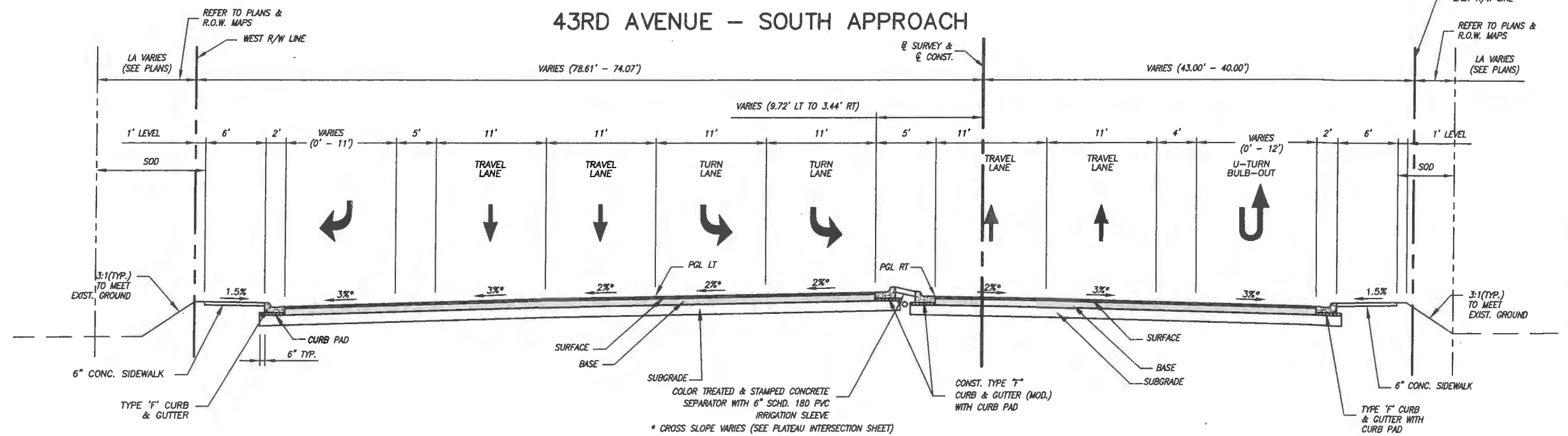


NEW CONSTRUCTION	
SURFACE:	1" TYPE FC-9.5 ASPHALTIC CONCRETE SURFACE COURSE (TRAFFIC C) (PG 76-22) W/ POLYMER OVER 1-1/2" TYPE SP-12.5 (TRAFFIC C) ASPHALTIC CONCRETE STRUCTURAL COURSE
BASE:	9" CEMENTED COQUINA SHELL (DOUBLE COURSE) WITH RC-70 PRIME COAT (LBR 100)
SUBGRADE:	12" STABILIZED SUBGRADE TYPE "B" (LBR-40)

**EXPANDED INTERSECTION – TYPICAL SECTION**

STA. 119+83.50 TO STA. 126+45.00  
43RD AVENUE – SOUTH APPROACH

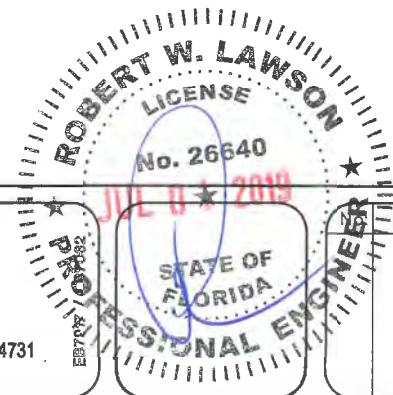
POSTED SPEED 45 MPH  
DESIGN SPEED 45 MPH



**EXPANDED INTERSECTION – TYPICAL SECTION**

STA. 127+50.00 TO STA. 133+48.80  
43RD AVENUE – NORTH APPROACH

NOTE:  
BRIDGE STA. 129+62.455 TO STA. 130+94.455  
REFER TO BRIDGE PLANS.



**ARCADIS**  
ARCADIS U.S., INC.  
1500 Gateway Blvd, Suite 200  
Boynton Beach, Florida 33426  
Tel: (561) 697-7000 Fax: (561) 369-4731  
www.arcadis-us.com

Revision:	By:	Date:

INDIAN RIVER COUNTY  
FLORIDA  
**Department of Public Works**  
Engineering Division

Scale: NTS  
Approved: HWD  
Drawn: FM  
Checked: HWD  
Date: 6/2017  
Field Book No:

Project:  
TYPICAL SECTIONS  
FOR  
SR 60 & 43RD AVENUE

Sheet: 7  
Of: 99  
Project No.  
LNW# WP1027